

Annual Northwest Snowdepths by Location—

Average (mean), Minimum and Maximum (Data in inches for period indicated through 6/1/2008)

Data compiled and archived by [NWAC](#) ([Northwest Weather and Avalanche Center](#))

Locations arranged approximately north to south in Washington and Northern Oregon

Washington--[Mt Baker](#) | [Stevens Pass](#) | [Snoqualmie Pass](#) | [Stampede Pass](#) | [Hurricane Ridge](#) |

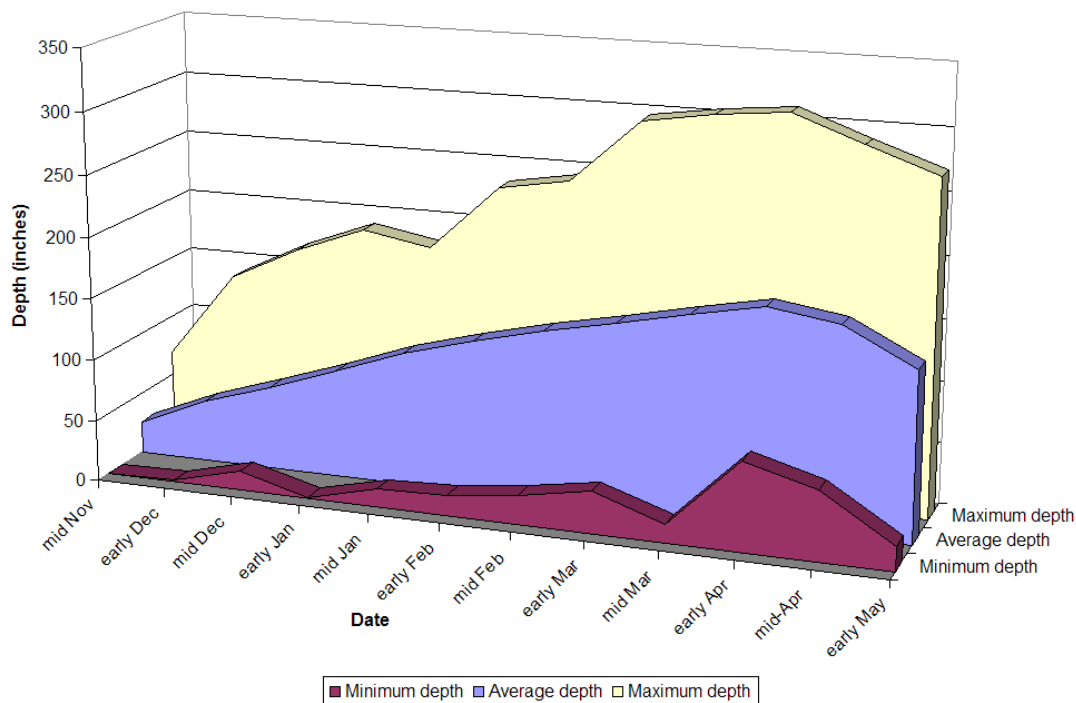
[Mission Ridge](#) | [Crystal Mt](#) | [Paradise](#) | [White Pass](#)

Oregon--[Timberline Lodge](#) | [Mt Hood Meadows](#)

Mt Baker, WA

Chart based on
NWAC data for
period indicated

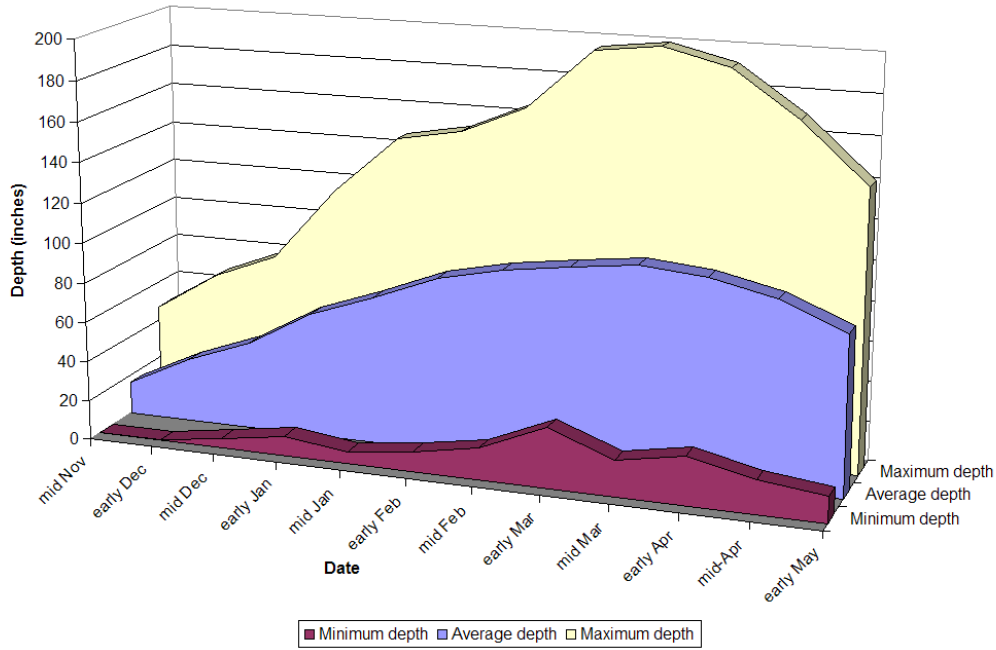
Minimum, Average and Maximum Snowdepths
Mt Baker, WA (1926-2008)



Stevens Pass, WA

Charts based on
NWAC data for
period indicated

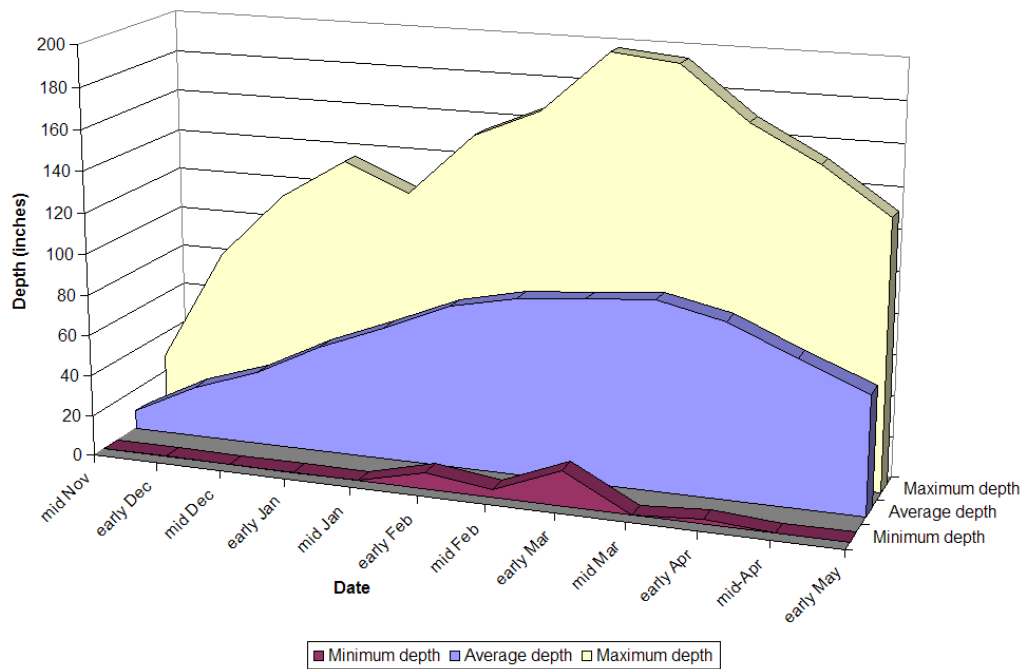
Minimum, Average and Maximum Snowdepths
Stevens Pass, WA (1939-2008)



Snoqualmie Pass, WA

Charts based on
NWAC data for
period indicated

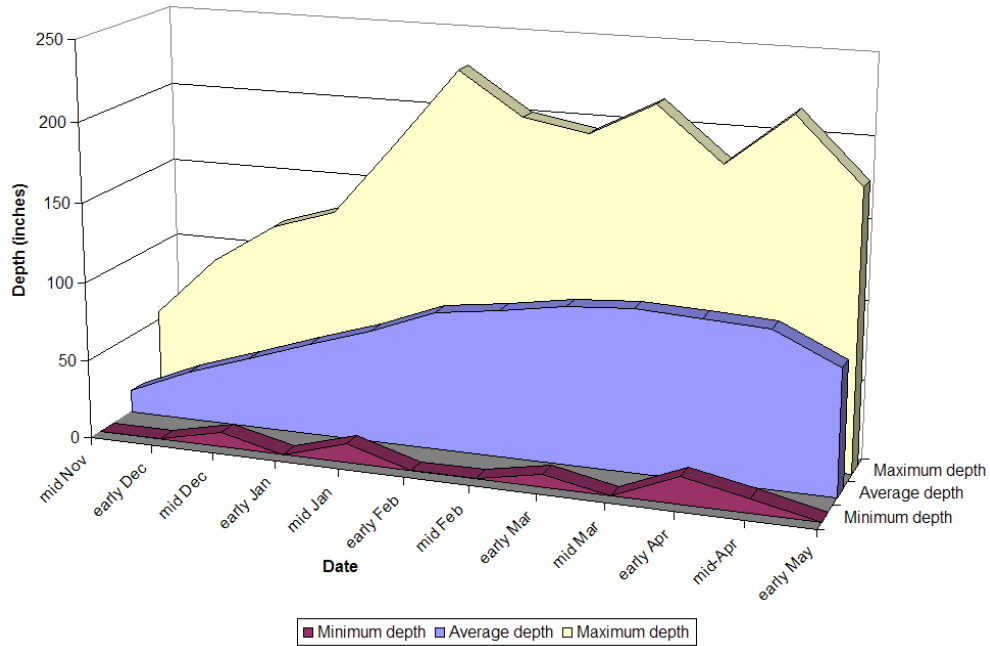
Minimum, Average and Maximum Snowdepths
Snoqualmie Pass, WA (1929-2008)



Stampede Pass, WA

Charts based on
NWAC data for
period indicated

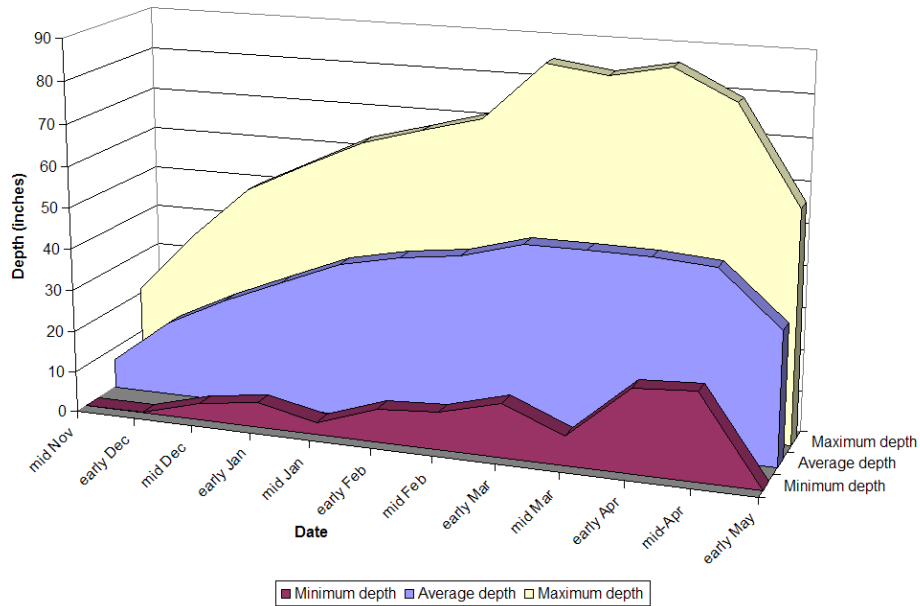
Minimum, Average and Maximum Snowdepths
Stampede Pass, WA (1943-2008)



Mission Ridge, WA

Charts based on
NWAC data for
period indicated

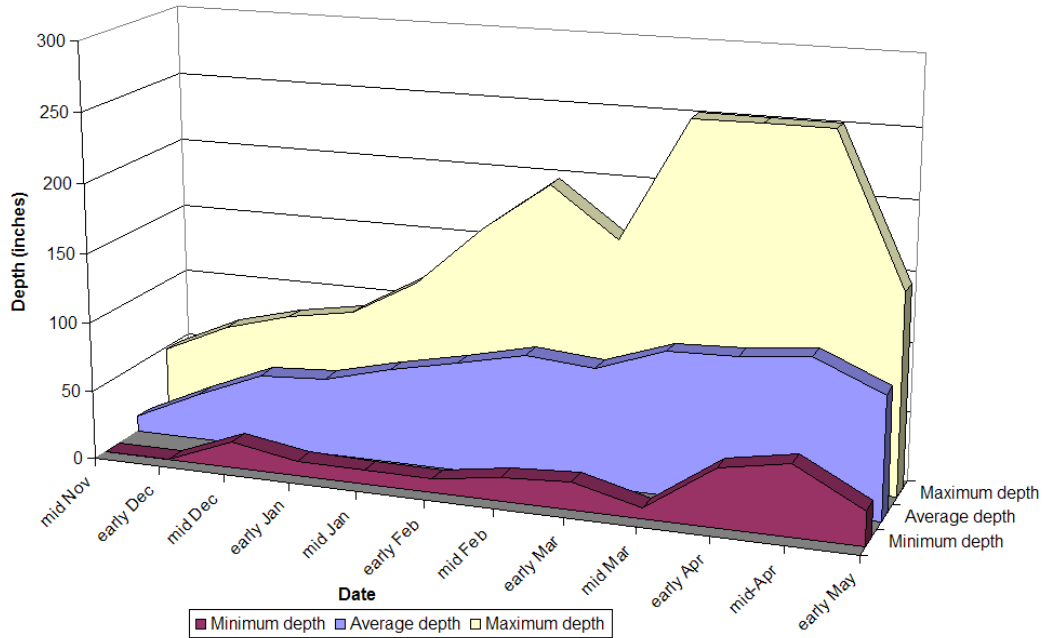
Minimum, Average and Maximum Snowdepths
Mission Ridge, WA (1970-2008)



Hurricane Ridge, WA

Charts based on
NWAC data for
period indicated

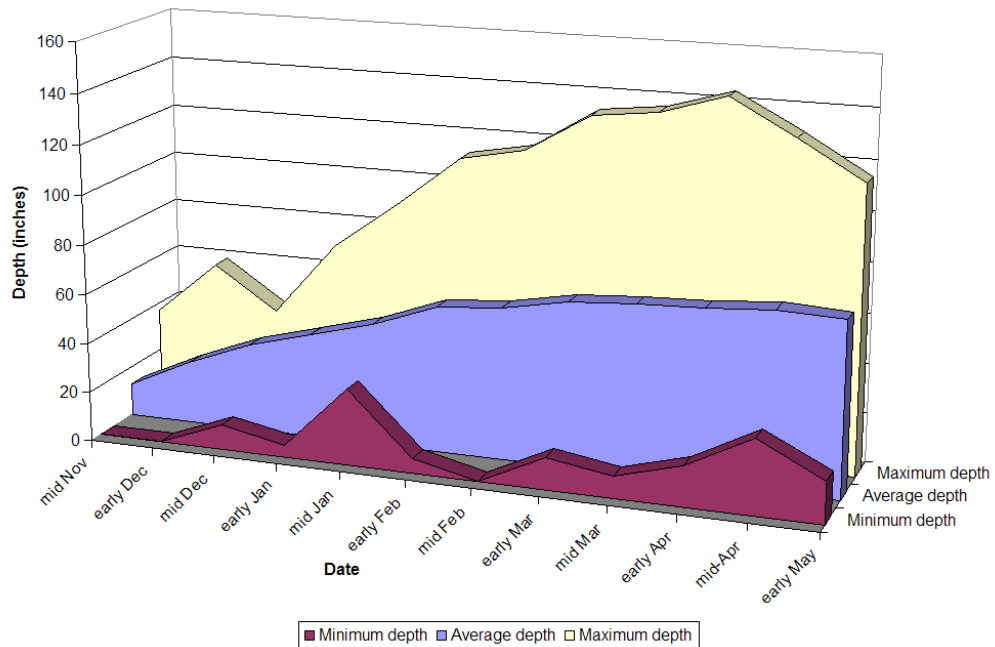
Minimum, Average and Maximum Snowdepths
Hurricane Ridge, WA (1979-2008)



Crystal Mt, WA

Charts based on
NWAC data for
period indicated

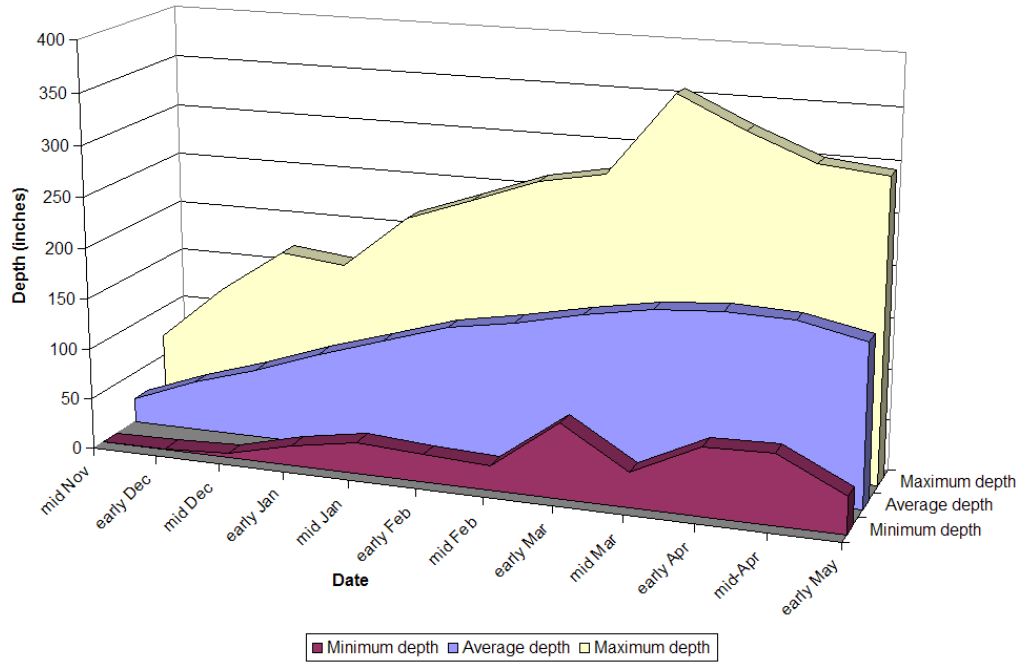
Minimum, Average and Maximum Snowdepths
Crystal Mountain, WA (1967-2008)



Paradise-Mt Rainier, WA

Charts based on NWAC data for period indicated

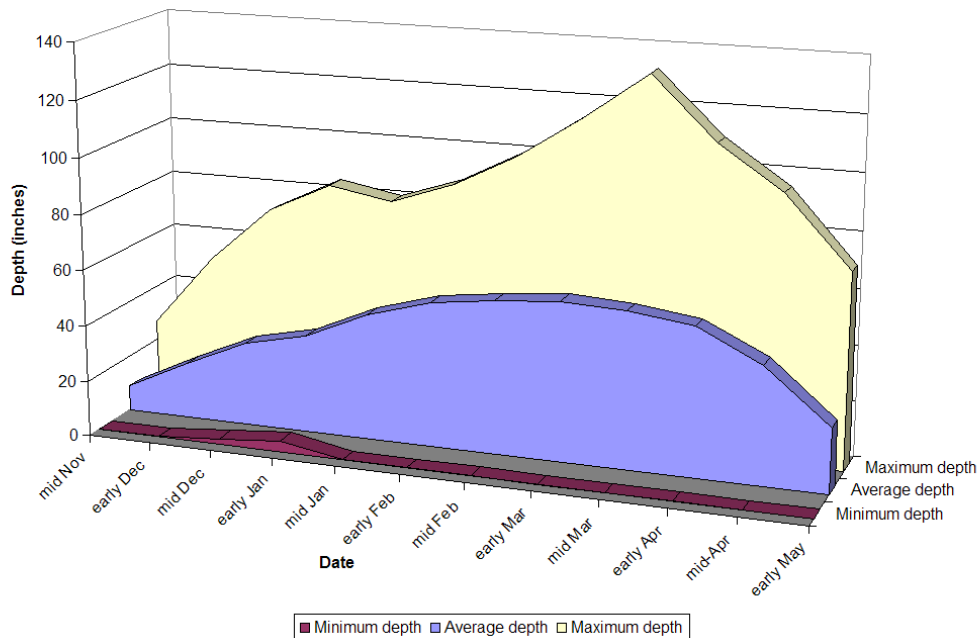
Minimum, Average and Maximum Snowdepths Paradise-Mt Rainier, WA (1926-2008)



White Pass, WA

Charts based on NWAC data for period indicated

Minimum, Average and Maximum Snowdepths White Pass, WA (1976-2008)

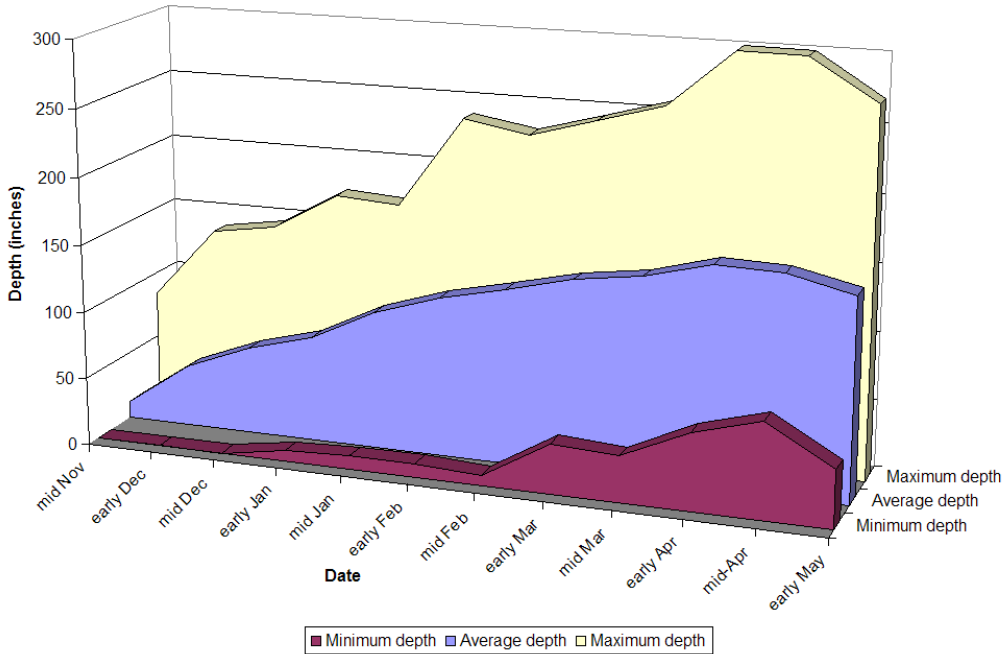


[Back to Top](#)

Timberline Lodge, OR

Charts based on NWAC data for period indicated

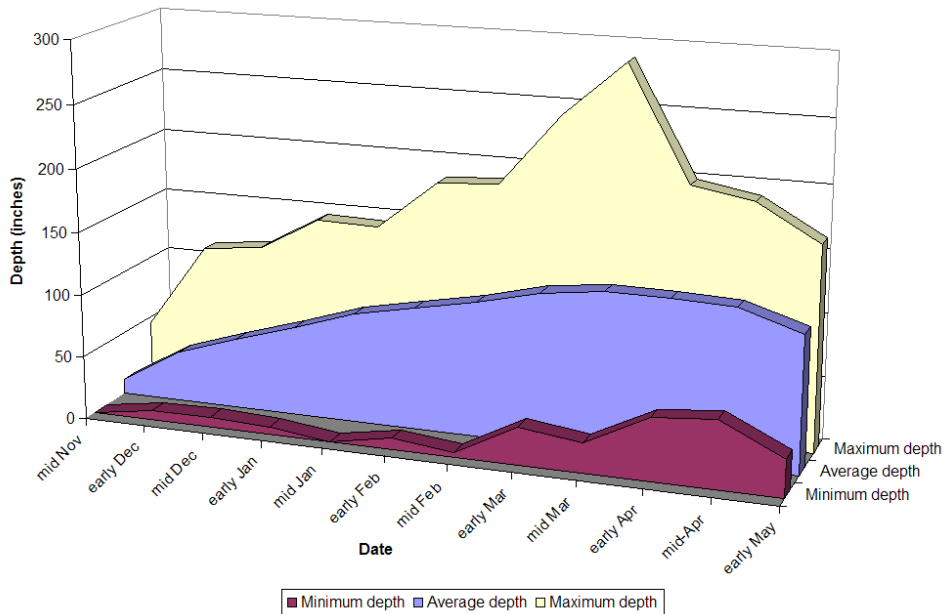
Minimum, Average and Maximum Snowdepths
Timberline Lodge, OR (1973-2008)



Mt Hood Meadows, OR

Charts based on NWAC data for period indicated

Minimum, Average and Maximum Snowdepths
Mt Hood Meadows, OR (1974-2008)



All data courtesy NWAC ([Northwest Weather and Avalanche Center](#))



© 2009 Northwest Weather and Avalanche Center -- ALL RIGHTS RESERVED